

Sat**Expander**

CONTENT SECURITY

Protect Your Digital Assets

PRODUCT SHEET

COMPREHENSIVE SECURITY SUITE FOR BROADCAST AND BROADBAND NETWORKS

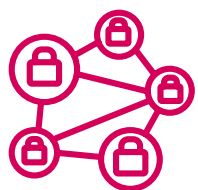
Built for mission-critical, real time data and video delivery, SatExpander content security solutions utilize extensive security algorithms and mechanisms to provide secured content delivery on top of greater transmission resiliency and robustness. Utilizing multi-layer content protection together with powerful management tool, SatExpander provides superior content protection solutions for broadcast and broadband applications.



AES-256 Encryption
BISS2-CA Scrambler / Descrambler
Channel, Transport, Payload protection



Automatic Dynamic Key Generation
OTA key Distribution and Management



Entitlement per Service
Scheduler & Booking
Embedded CAS
Secured Management Sessions

SAFEGUARDING HIGH-VALUE MEDIA BROADCAST

Piracy threats and unauthorized access to high-value content have rapidly escalated in the last few years, impacting media providers' revenues and profitability, and undermining media business models. Designed for multiple media delivery setups, SatExpander offers multi-layer content protection, securing service, transport, and payload.

SATEXPANDER PROTCASTER – the world's leading content protection – assures media security by employing AES 256-bit encryption for full transport stream encryption, including payload, header and signaling. SatExpander ProtCASTER also includes easy-to-use media scheduling and booking management, allowing to pre-schedule broadcast events and book the necessary resources and permissions.

SATEXPANDER BISS2-CA – the world's latest standard – provides flexible open standard conditional access solution, employing AES 128-bit encryption for elementary stream encryption.

SatExpander content security management system presents automatic and dynamic key generation, with over-the-air key distribution, controlling and operating both ProtCASTER and BISS2-CA encryption, and enabling frequent change of the encryption keys. The content security management system also includes highly flexible entitlement management, offering unified view of the entire destination list and full control over service rights, enabling to grant and revoke usage rights dynamically in real-time.



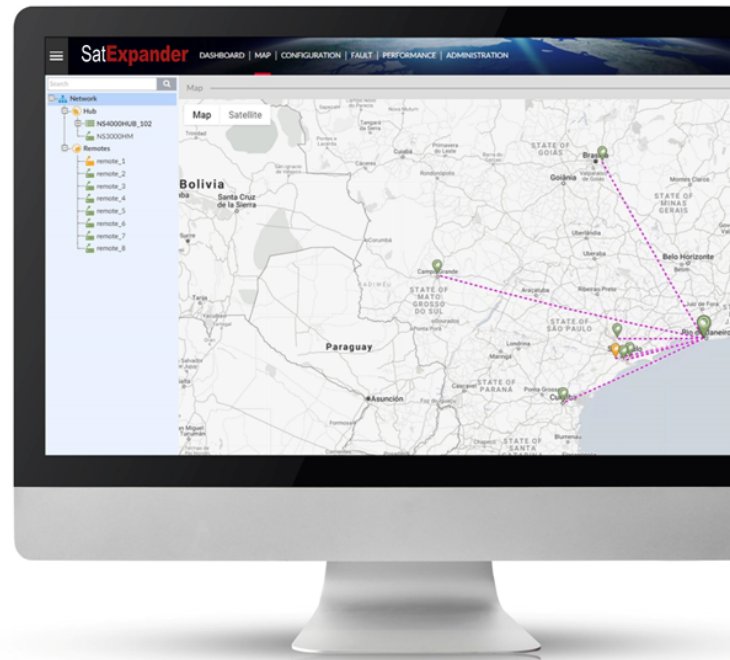
SatExpander

SECURING MISSION-CRITICAL BROADBAND NETWORKS

Cyber threats against satellite communication are constantly advancing as adversaries are working to intercept, exploit, degrade and deny communications capabilities, jeopardizing operations, assets and lives. Heightening content protection and security, SatExpander presents comprehensive solution to meet the growing applications and requirements of mission critical satellite communications.

Securing the content, protecting the transmission, and preventing interception, SatExpander provide cyber, link and operational security for satellite connectivity utilizing SatExpander AES-256 encryption, together with automatic and dynamic key generation with over-the-air distribution, SatExpander content security solutions employ multi-layer encryption, securing service, transport, and traffic. For restricting system access and protect remote and on-prem management connectivity, extensive secured management sessions are also provided.

Low Probability of Detection / Interception (LPD/LPI) are key capabilities required to protect against adversaries who try to obtain information through monitoring and analysis of the satellite transmission. To mask any communications activity, SatExpander implements advanced carrier concealment and traffic concealment.



All registered trademarks are the property of their respective companies. This brochure is being provided for informational purposes only. The details contained in this document, including product and feature specifications, are subject to change without notice and shall not bind SatExpander to a specific product or set of features related thereto. DVB is a registered trademark of the DVB Project.

For more information visit www.SatExpander.com

SatExpander