

SatExpander

SatNet NMS

Carrier-Grade Network Management System

PRODUCT SHEET

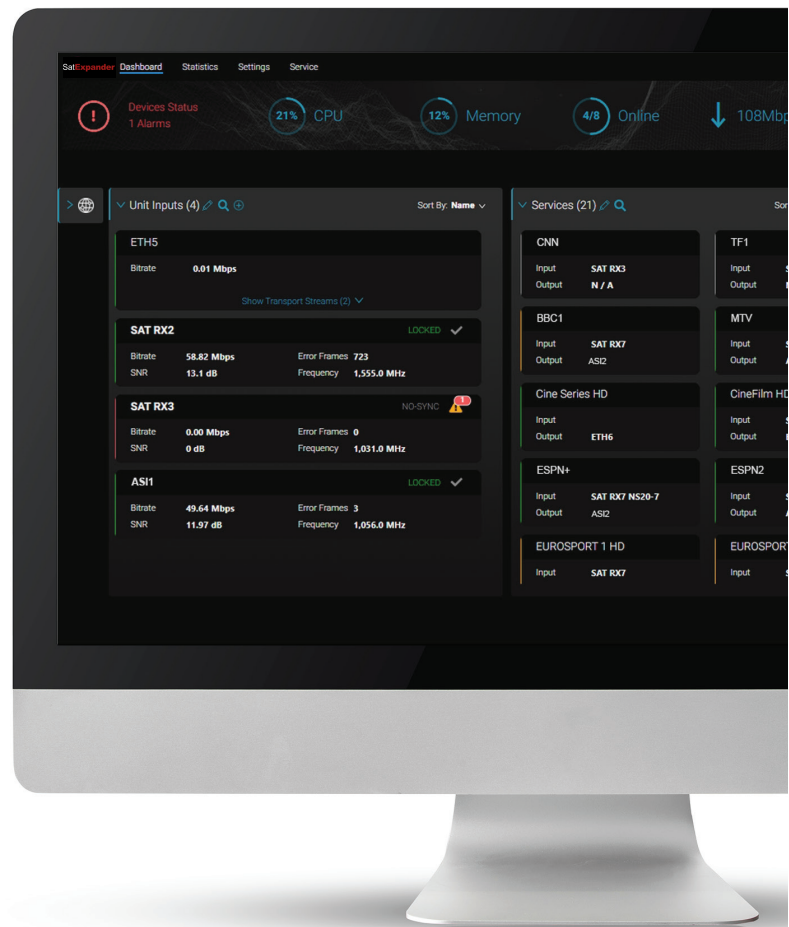
Effectively managing communications services is now more crucial than ever. SatExpander's Network Management System empowers network operators and service providers with cohesive management and network-wide visibility to keep up with the business requirements. Addressing key operational challenges, SatNet NMS accelerates time to market, reduces operational complexity and manages changing environments.

DESIGNED FOR SERVICE DELIVERY

Built for high-volume, high-value services, SatNet NMS provides powerful and effective management of SatExpander's full range of data and video products, maximizing network performance, optimizing operational efficiency, and streamlining service fulfillment and service assurance. A complete set of network management functions enables end-to-end life cycle management of networks and services from deployment stage through ongoing configuration and maintenance procedures.

ONE-STOP CONFIGURATION

Designed to rapidly create network of any size, SatNet NMS enables quick and easy, end-to-end network configuration and service provisioning. Presenting central control of network-wide setup, configuration, monitoring and troubleshooting, SatNet NMS integrates robust online and offline capabilities with configuration profiles to simplify configuration and activation of network services. Advanced management tools automate configuration and maintenance tasks across the network and enable scheduling and background operation of bulk processes. Combining network-wide and device-level configurations, SatNet NMS offers an agile and powerful solution for meeting diverse and changing needs.



SMART AND EASY OPERATIONS

SatNet NMS delivers broad visibility of the entire network with real-time view of traffic, devices, alarms and events. Real-time monitoring, diagnostic and analyses of critical network performance indicators provide a comprehensive understanding of the current state of the network, its elements and of physical and virtual resources. Custom dashboards and maps present logical and physical locations and connections, enabling both high-level overview and in-depth visibility. Detailed performance metrics and graphs support actionable analysis, engineering and planning activities. Empowering network and service operation centers, SatNet NMS allows rapid troubleshooting and fast problem resolutions as well as extensive reporting and statistics of real-time and historical network data.

ULTIMATE SCALABILITY

Versatile and flexible, SatNet NMS controls and manages all network elements, resources and services across multiple hubs, teleports and satellites, allowing easy scalability from the smallest network to global multi-service networks. Making it easy to integrate new components into the network, SatNet NMS enables to expand the network on-the-fly and scale both in size and functionality. Supporting changing and growing needs, SatNet NMS features a modular design, accommodating various NMS setups, and allowing for multiple network configurations and service options.

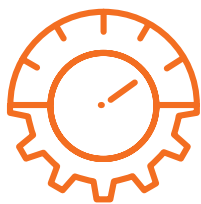
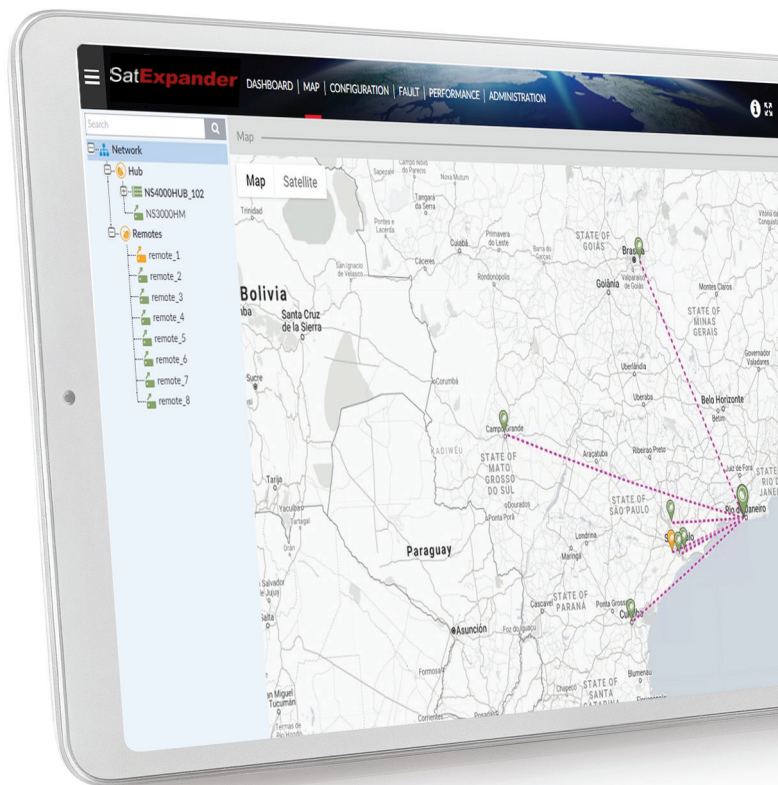
OPEN ARCHITECTURE

Based on open architecture, SatNet NMS can be deployed on a virtualized server or on-premises to fit any size or type of network. From a single-server installation to high-availability clusters without a single point of failure, SatNet NMS offers flexible operation and redundancy models as well as allows future upgrades and expansions. Web-based, client/ server architecture provides unlimited client access, enabling to manage, control and monitor the network from any location. Multi-node NMS architecture provides full database redundancy and enables to define database backup and restore processes according to network operator preferences. Enabling network orchestration of bigger and broader ecosystems, SatNet NMS architecture supports open northbound interfaces for third-party business operations components and end-to-end system management.



HIGH CONTENT PROTECTION AND SECURITY

Built for mission-critical, real time data and video delivery for point-to-point and point-to-multi-point networks, SatNet NMS manages network operation and service connectivity as well as protection and security of the delivered content. Complementing SatExpander's extensive security options, SatNet NMS offers extensive security management tools for broadcast and broadband applications. Automatic and dynamic key generation, with over-the-air key distribution, controls and operates SatExpander AES 256-bit encryption and BISS2-CA compliant scrambler / descrambler. Highly flexible entitlement management offers unified view of the entire destination list and full control over service rights in real time. In addition, easy-to-use media scheduling and booking management allows to pre-schedule broadcast events and book the necessary resources and permissions.



**MAXIMIZE
NETWORK
PERFORMANCE**



**OPTIMIZE
OPERATIONAL
EFFICIENCY**



**STREAMLINING SERVICE
FULFILLMENT AND
SERVICE ASSURANCE**

13-12-2023

All registered trademarks are the property of their respective companies. This brochure is being provided for informational purposes only. The details contained in this document, including product and feature specifications, are subject to change without notice and shall not bind SatExpander to a specific product or set of features related thereto. DVB is a registered trademark of the DVB Project.

For more information visit www.SatExpander.com

SatExpander